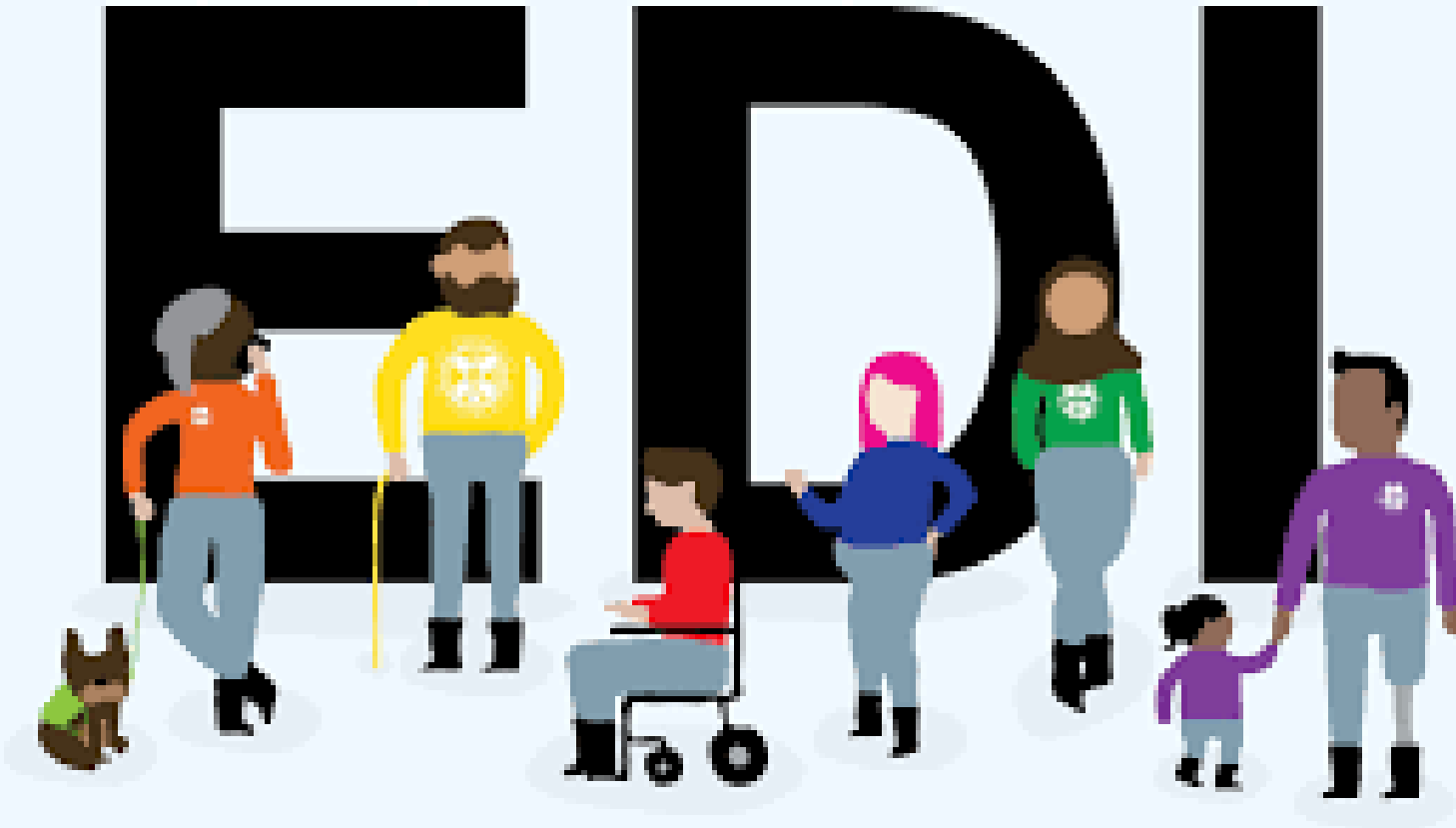


Equality Diversity Inclusion



**Tuesday 10th
December 2024**

What does inclusion look like?

What does EDI mean?

- Equality, diversity, and inclusion (EDI) are critical components of a healthy school culture. A focus on EDI creates a **welcoming, supportive environment where every student and staff member can thrive**
- Equality means that everyone is treated fairly and has the same opportunities, regardless of their differences. Diversity is about **recognising and celebrating differences**, including race, gender, religion, disability, and sexual orientation. Inclusion means creating an environment where every individual feels valued and respected, and where everyone has a sense of belonging.
- **Today we will be focusing on inclusion**



Progress since our last meeting

More
representation
through
curriculum

More
representation
through texts

Staff meetings

New SENDCo

More educational
visits/ workshops
to ensure cultural
capital

What Does Inclusion Look Like at All Saints'?

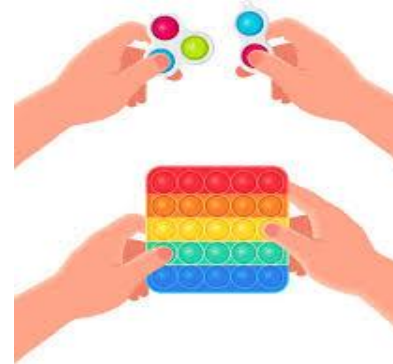
Movement Breaks



Calm areas



Sensory (fiddle) toys



Personalised behaviour plans



Targeted Interventions

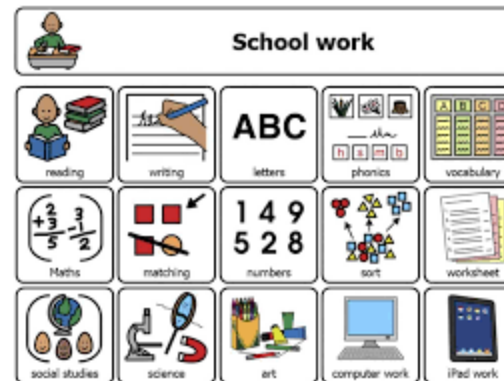


Individual Work Spaces



twinkl.com

Individual Timetables



Research Informed Practice



Ambitions for the Future

- A behaviour policy that is equitable
- Continued and improved communication with parent and carers about inclusive practice
- Regular network meetings for EDI working party
- Informing all stakeholders about recent research
- Contemporary training offers
- **Sensory space**



Extra Resources

- Carol Hill - Wandsworth SEN Local Offer

